



4 Hill Lane

Hartley, Plymouth, PL3 5QU

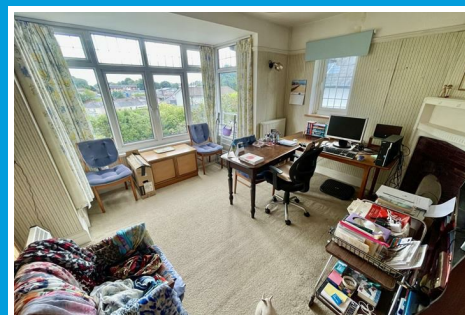
£475,000



4 Hill Lane

Hartley, Plymouth, PL3 5QU

£475,000



HILL LANE, HARTLEY, PLYMOUTH, PL3 5QU

SUMMARY

A spacious 1928 built semi-detached house with generously proportioned accommodation offering great potential. The accommodation comprises reception hall, wc, 2 spacious reception rooms, breakfast room, kitchen, 4 bedrooms, master with en-suite shower room, bathroom & separate wc. The property would benefit from updating. Gardens to the front & rear. Private drive.

LOCATION

Found in this prime, popular, established residential area of Hartley bordering on Mannamead with a good variety of local services & amenities to hand. The position convenient for access into the city & close by connection to major routes in other directions.

ACCOMMODATION

A semi-detached house built circa 1928 & apparently designed by the architect for his own occupation, which is somewhat larger than the adjoining similarly styled properties that he designed. Gas central heating with a modern 3 year old Ideal boiler & double-glazing in 2003. The property maintained over the years but would now benefit from a program of refurbishment & improvement. Generously proportioned accommodation laid out over 2 storeys. The property comprises entrance lobby, large reception hall, downstairs cloakroom/wc, 2 spacious reception

rooms, breakfast room & kitchen at ground floor level.

At first floor level a landing with airing cupboard & shelved storage cupboard. Access to a master bedroom with en-suite shower room, 3 further good-sized bedrooms, 1 having a store room off, bathroom & separate wc.

Externally with a long private drive & garage to the rear. A front garden & enclosed rear garden enjoying a good degree of privacy.

GROUND FLOOR

ENTRANCE LOBBY

4'5 3'7 (1.35m 1.09m)

RECEPTION HALL

19'2 x 9'11 overall (5.84m x 3.02m overall)

WC

4'7 x 4'2 (1.40m x 1.27m)

SITTING ROOM

17'3 x 15'1 maximum (5.26m x 4.60m maximum)

DINING ROOM

16'8 x 13'6 maximum (5.08m x 4.11m maximum)

BREAKFAST ROOM

11'10 x 11'5 (3.61m x 3.48m)

KITCHEN

15'6 x 7' (4.72m x 2.13m)

FIRST FLOOR

LANDING

MASTER BEDROOM

17'6 x 12'1 floor area maximum (5.33m x 3.68m floor area maximum)

EN-SUITE SHOWER ROOM

7'2 x 3'7 (2.18m x 1.09m)

BEDROOM TWO

11'8 x 11'3 maximum (3.56m x 3.43m maximum)

STORE

11'11 x 7'6 estimated (3.63m x 2.29m estimated)

BEDROOM THREE

12'3 x 13'7 maximum (3.73m x 4.14m maximum)

BEDROOM FOUR

9'10 x 7'3 (3.00m x 2.21m)

BATHROOM

6'7 x 5'3 (2.01m x 1.60m)

WC

6'7 x 2'11 (2.01m x 0.89m)

EXTERNALLY

GARAGE

15'9 x 8'4 (4.80m x 2.54m)

GARDENS TO FRONT & REAR

GARDEN SHED

COUNCIL TAX

Plymouth City Council
Council Tax Band: E

SERVICES PLYMOUTH

The property is connected to all the mains services: gas, electricity, water and drainage.



Road Map



Hybrid Map



Terrain Map



Floor Plan

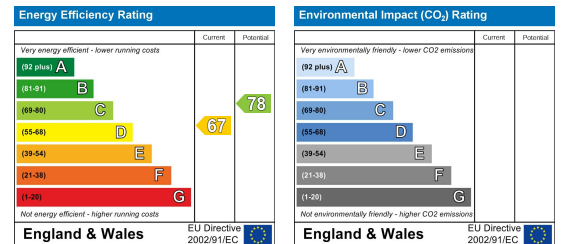


Made with Metropix ©2025

Viewing

Please contact our Plymouth Office on 01752 664125 if you wish to arrange a viewing appointment for this property or require further information.

Energy Efficiency Graph



These particulars, whilst believed to be accurate are set out as a general outline only for guidance and do not constitute any part of an offer or contract. Intending purchasers should not rely on them as statements of representation of fact, but must satisfy themselves by inspection or otherwise as to their accuracy. No person in this firm's employment has the authority to make or give any representation or warranty in respect of the property.